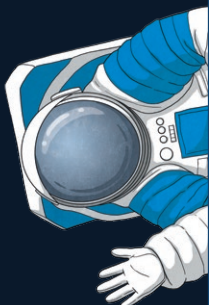


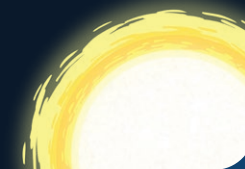
When I'm an Astronaut

1. Find and copy an adverb used in the poem.
2. What **two** things does the astronaut do before getting into the rocket?
3. What do you think 'ground control' is?
4. Do you think the astronaut enjoys going into space? Why?
5. What do you think the astronaut would see when looking out of the rocket?



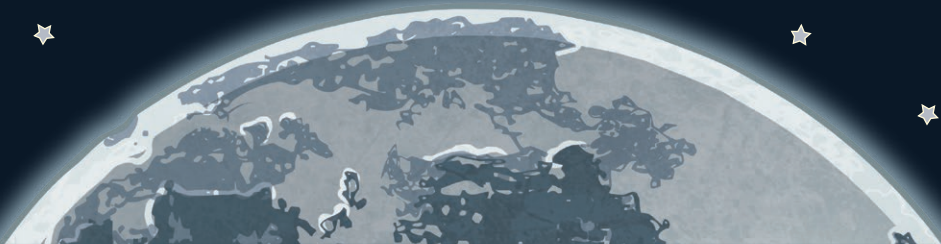
The Moon

1. What simile does the poet use to describe the moon?
2. Write down all the adjectives in the poem.
3. What do you think the author means by 'catches the light from the burning sun'?
4. Find and copy a **pair** of words in the poem that rhyme.
5. Think of a different simile that could be used to describe the moon and write it below.



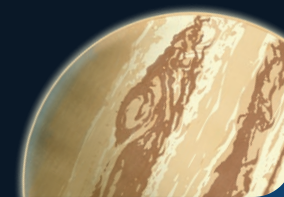
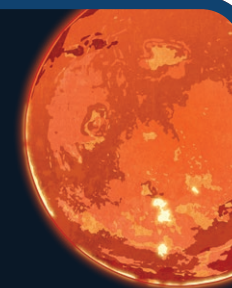
Moonlight

1. Write down **two** adjectives used in this poem.
2. Why do you think the text is arranged in the way it is?
3. What do you think the 'path' is in the poem?



Children of the Sun

1. Write down a **pair** of rhyming words that appear in the poem.
2. Why do you think the poet describes Mars as 'angry'?
3. Why does the poet describe Jupiter as having an 'eye'? Use the illustration on the poem to help you.
4. Why do you think the poet has called the poem 'Children of the Sun'?



When I'm an Astronaut

1. bravely
2. The astronaut puts on his suit and waves goodbye before getting into the rocket.
3. Pupils' own responses, such as: I think ground control is where the scientists help the astronaut to control the rocket.
4. Pupils' own responses, such as: Yes, I think the astronaut enjoys going into space because the poem says 'a smile upon my face'.
5. Pupils' own responses, such as: I think the astronaut would see stars, planets and meteors when looking out of the rocket.

The Moon

1. Dead as stone
2. cold, dark, dead (accept 'dead as stone'), burning
3. Pupils' own responses, such as: I think the author means that the moon 'uses' the Sun's light to reflect and look like it is lit up in the sky.
4. Accept: 'own' and 'stone' or 'sun' and 'done'.
5. Pupils' own responses. Accept any simile that could be used to describe the moon.

Moonlight

1. dark, pale
2. The text is arranged to look like the shape of a crescent moon.
3. The 'path' in the poem is the moonlight shining on the ground.

Children of the Sun

1. Accept: 'small' and 'all', 'near' and 'clear', 'eye' and 'sky', 'cold' and 'old'.
2. Pupils' own responses, such as: I think the poet described Mars as 'angry' because it is red and that is a colour associated with anger and feeling angry.
3. Pupils' own responses, such as: I think the poet described Jupiter as having an 'eye' because it has a large red spot which is in a similar shape to an eye.
4. Pupils' own responses, such as: I think the poet called the poem 'Children of the Sun' because it is about the planets which are smaller than the Sun and grouped around it like children to a parent.