



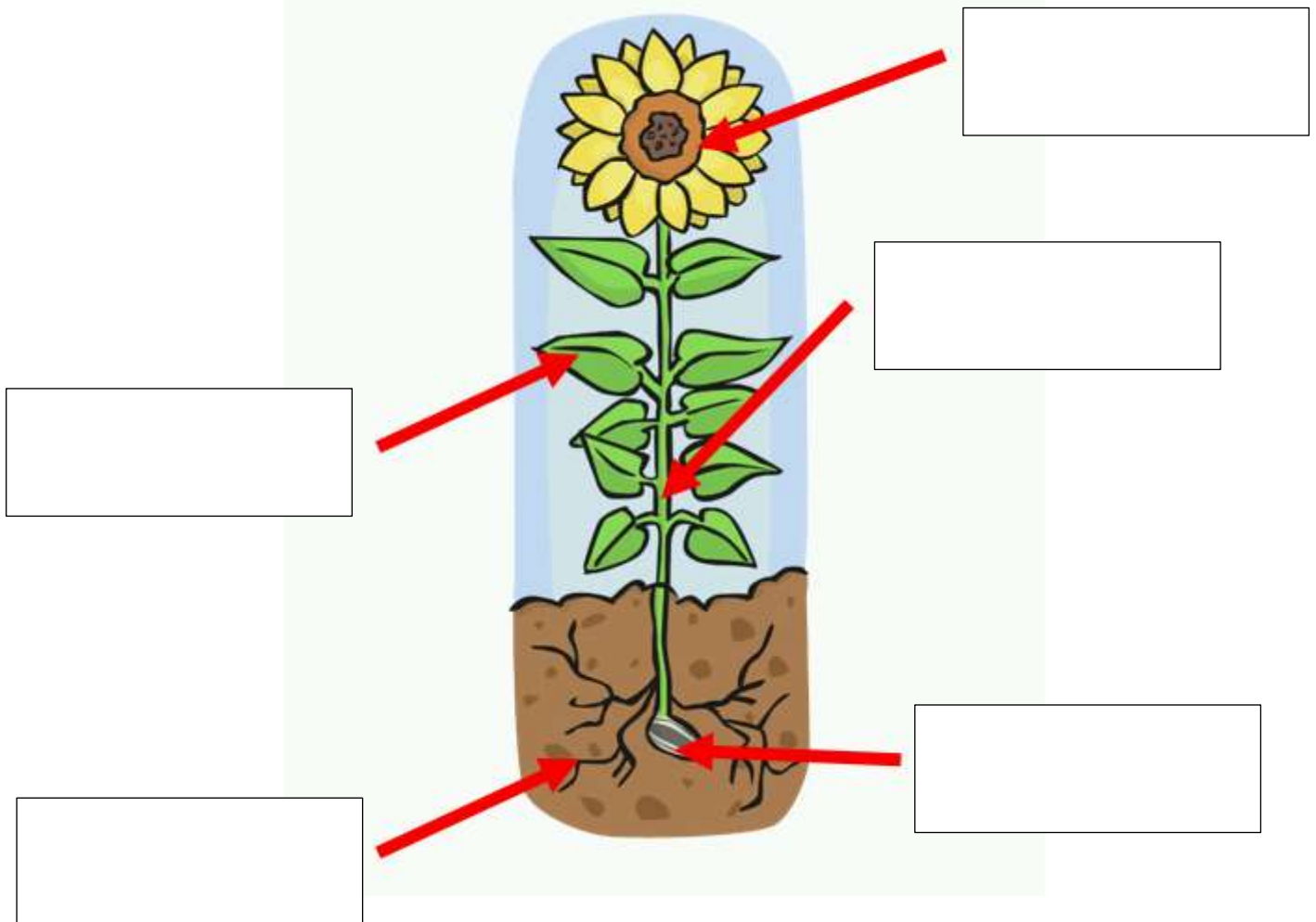
### Science Lesson 1 Learning Objective

- I can describe the parts of a plant and their function.

### Warm up your brain!

What parts of a plant can you name already? Don't peek below!

L.O. To know the parts of a plant and their functions



### The facts you need!

Ask your adult to help you find these and then watch them.

<https://www.bbc.co.uk/bitesize/topics/zpxnyrd/articles/z3wpsbk>

<https://www.bbc.co.uk/teach/class-clips-video/science-ks1-ks2-ivys-plant-workshop-parts-of-a-plant/zvdkpg8>

<https://www.youtube.com/watch?v=CqYe6kN7jrQ&safe=active>

These videos are filled with lots of facts about the different parts and functions of a plant. Check that you labelled the first picture correctly and / or fill in any of the missing parts.

### **Your Creative Task...**

#### **Task 1**

Now you know all about the different parts and functions of a plant, can you create a folding fact booklet for each part? On the sheet attached below, label the different parts again and fill in the missing words to the sentences describing their function. Don't forget to colour the picture neatly too!

After, cut out the two parts and stick the function sheet behind the picture.

#### **Task 2**

Together sing this song to help remember the names and functions of the parts of a plant.

#### **Parts of a Plant Song** (To the tune of "The Wheels on the Bus")

The roots on a plant grow underground,  
Underground, underground.  
The roots on a plant grow underground,  
Roots are part of a plant.

The stems on a plant hold up the leaves,  
Up the leaves, up the leaves.  
The stems on a plant hold up the leaves,  
Stems are part of a plant.

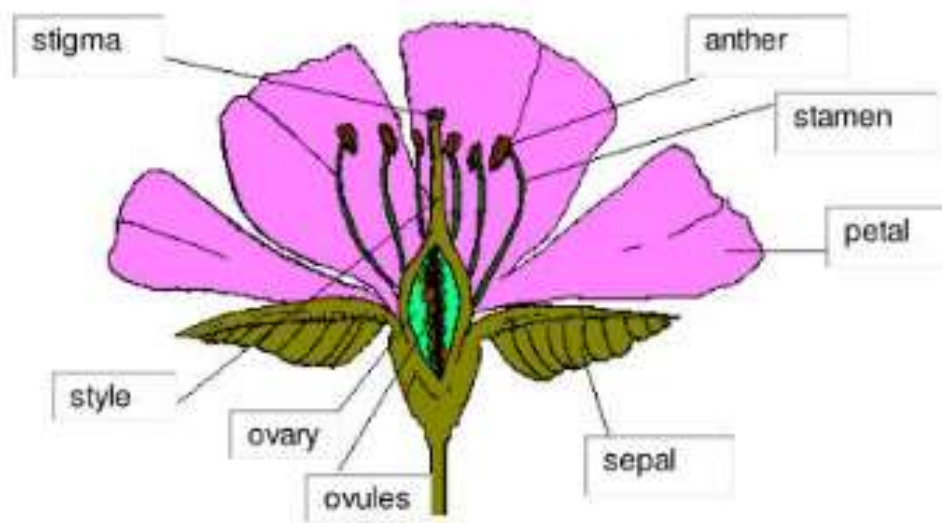
The leaves on a plant are making food,  
Making food, making food.  
The leaves on a plant are making food,  
Leaves are part of a plant.

The flowers on a plant are growing seeds,  
Growing seeds, growing seeds.  
The flowers on a plant are growing seeds,  
Flowers are part of a plant.

#### **Task 3**

When you go out into the garden or for a walk, take a close look at different types of plants. Make sure you can recall the parts and their function! Whilst looking closely, see if you can find the

stamens, style and stigma in the centre of a flower. These parts are responsible for making the seeds.



Tweet photographs of your finished plant and function pictures. If you can't tweet then send photographs by e-mail!

#### Our Twitter

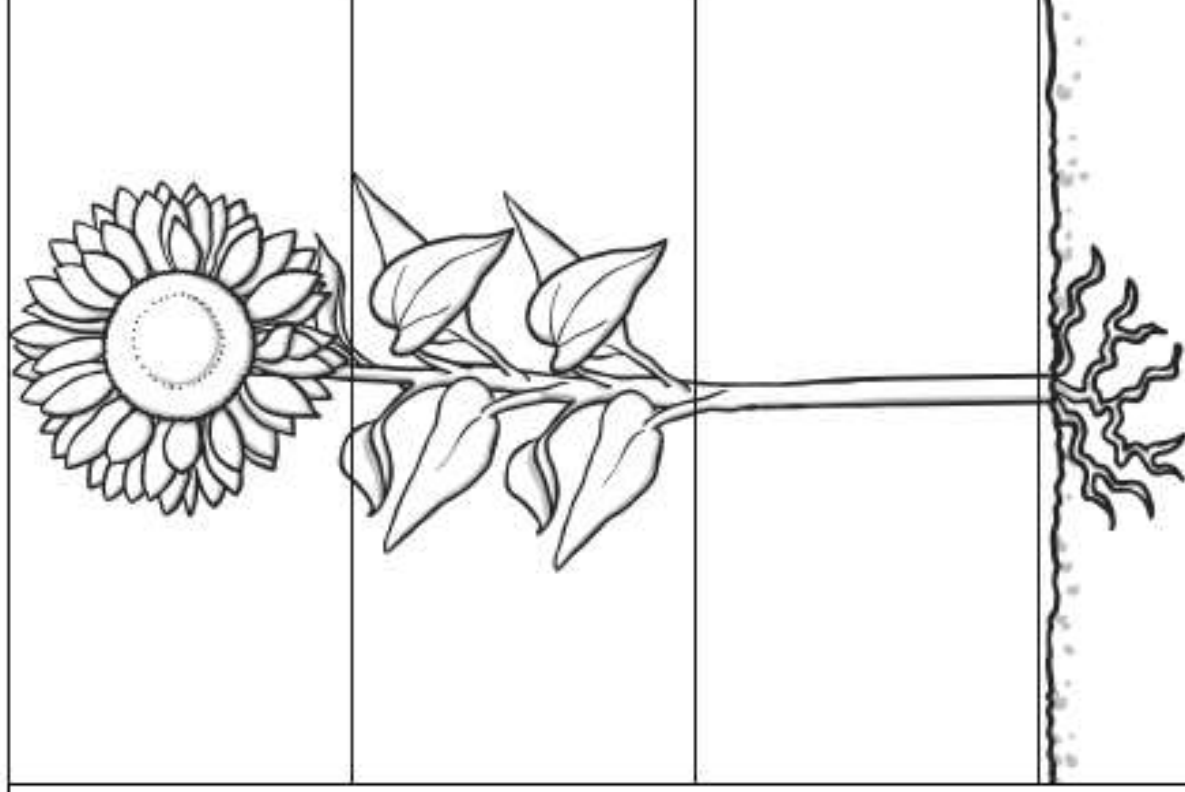


**Church Hill**  
@ChurchHillUS

**Happy  
Creating!**

# Parts of a Plant

Part 1



Glue part 1 here.

Fill in the gaps to explain the different jobs.

Part 2

## The Flower

Flowers make \_\_\_\_\_ to grow new \_\_\_\_\_.

## The Leaves

The leaves make \_\_\_\_\_ for the plant using \_\_\_\_\_ and carbon dioxide from the \_\_\_\_\_.

## The Stem

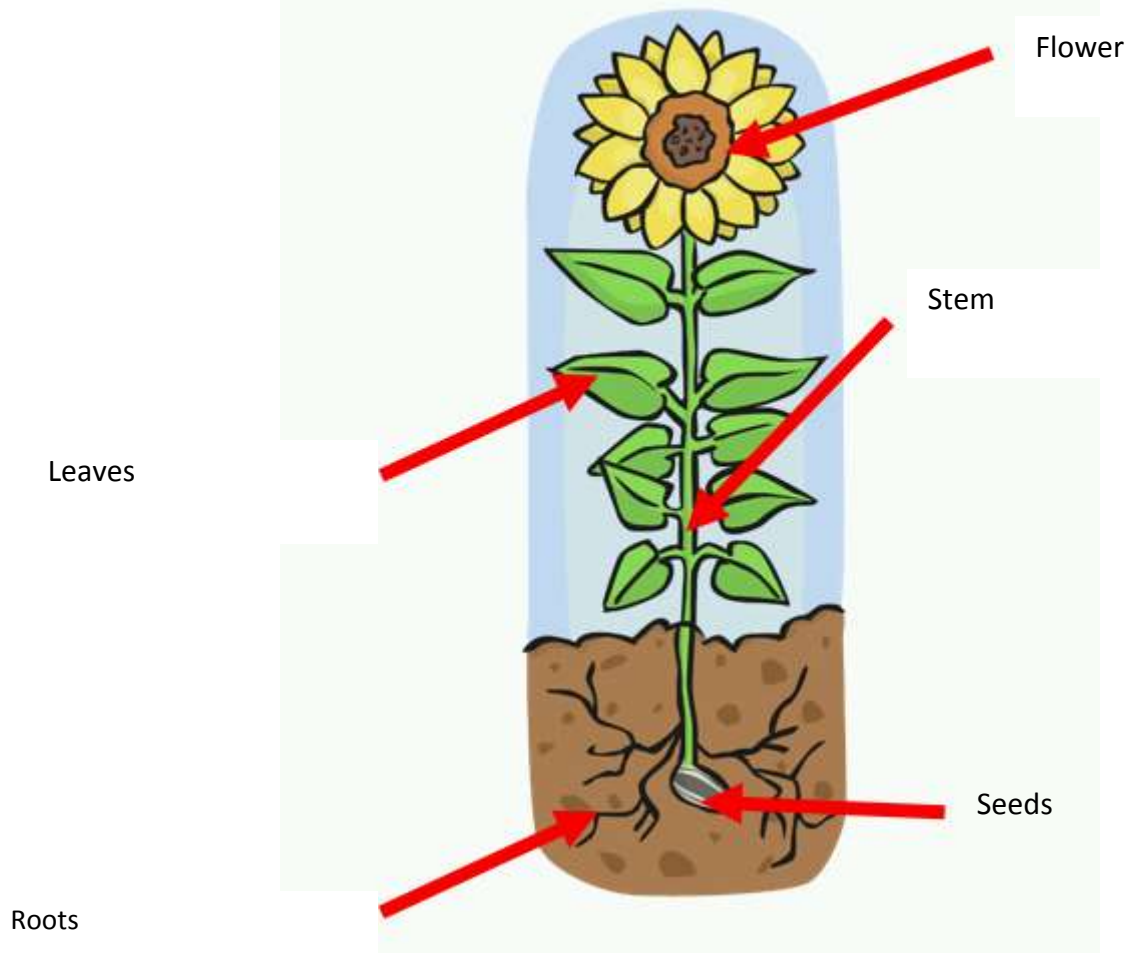
The stem \_\_\_\_\_ the plant up. It also transports \_\_\_\_\_ and \_\_\_\_\_ from the roots to the \_\_\_\_\_.

## The Roots

The roots \_\_\_\_\_ the plant into the ground. They \_\_\_\_\_ water and \_\_\_\_\_ from the soil.

## Answers for labelling

**L.O. To know the parts of a plant and their functions**



## Parts of Plants: Descriptions of Jobs

### **The Stem**

The stem holds the plant up. It also transports water and nutrients from the roots to the leaves.

### **The Flower**

Flowers make seeds to grow new plants.

### **The Leaves**

The leaves make food for the plant using sunlight and carbon dioxide from the air.

### **The Roots**

The roots anchor the plant into the ground. They absorb water and nutrients from the soil.