

LO: To appreciate the artwork of other artists

Look at the following pictures:



Bouquet of Flowers on a Ledge



The Tree of Life



In the Garden



Vegetables in a Bowl (The Gardener)



Irises



Exotic Landscape



Evening; Red Tree

Which of the pictures is...

...the most realistic?

...the oldest?

...the most colourful?

...the least realistic?

...the newest?

...the least colourful?

LO: To appreciate the artwork of other artists

Stick the picture here or draw it

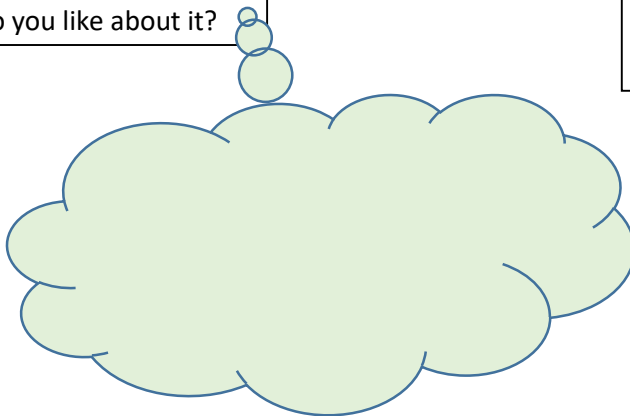
Choose one of the art pictures from the selection above (you can either print one off or draw it). Then answer the questions.

Think carefully about your answers.

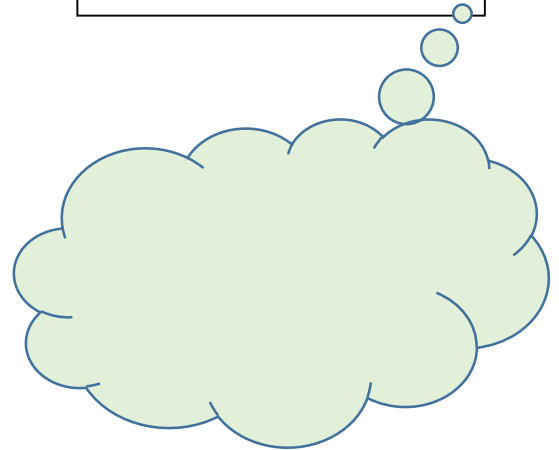
Artist, title and date of artwork

What can you see in the picture?

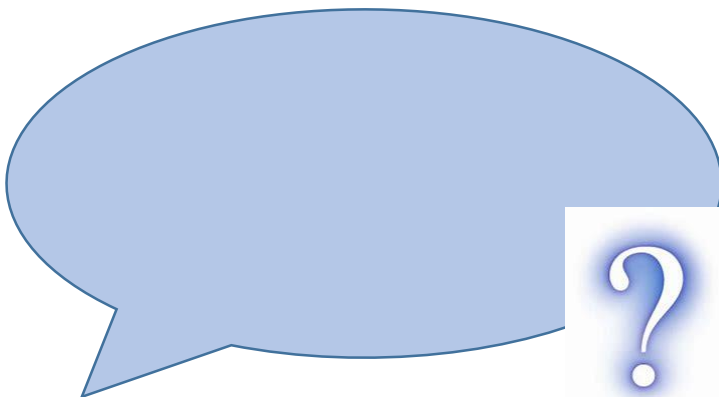
What do you like about it?



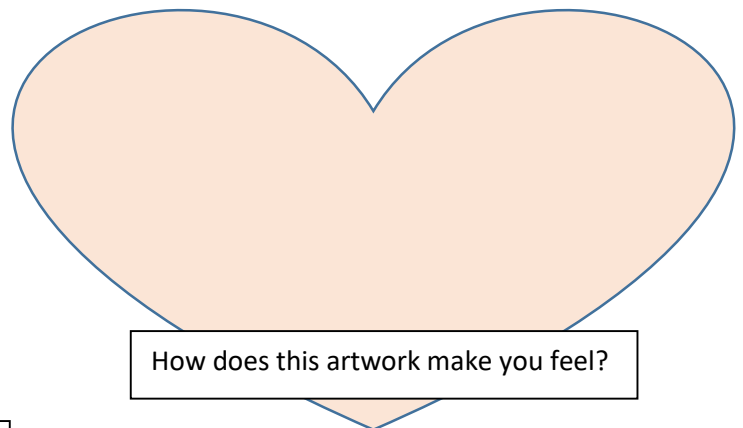
What do you dislike about it?



What three words or phrases would you use to describe this artwork?



If you could ask the artist one question, what would it be?

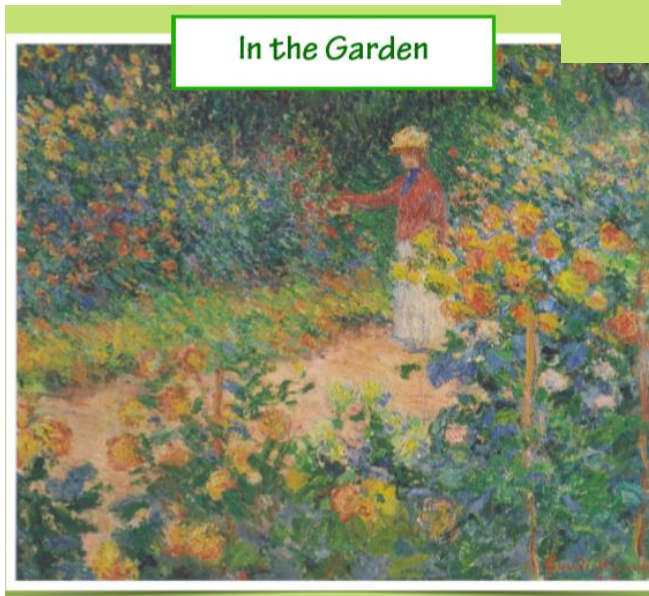


How does this artwork make you feel?

Here is some information about each piece of artwork.

Sometimes, when we know more about a piece of artwork, we understand it better, and this can change our viewpoint and feelings towards it.

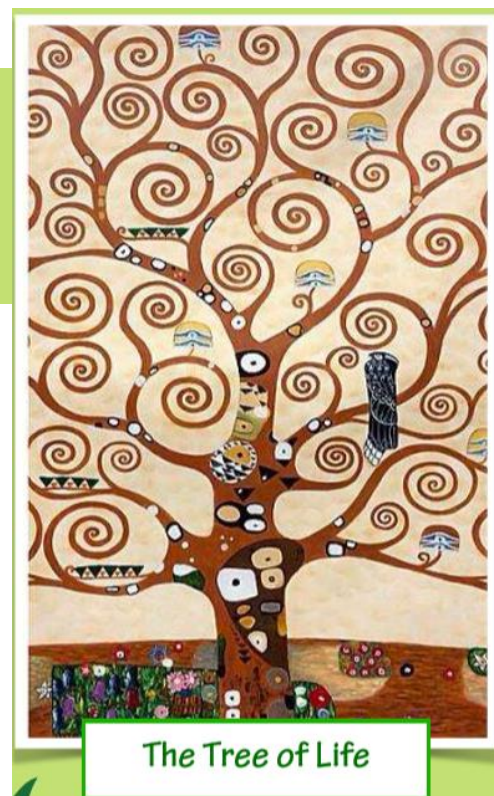
Artist: Claude Monet (French)
Date artwork created: 1895
Size of artwork: 81 cm by 95 cm
Media used: oil paint



Monet painted in the Impressionist style. This is a type of art that tries to capture a feeling or experience rather than being accurate. For this painting, Monet was inspired by his own garden.

Artist: Gustav Klimt (Austrian)
Date artwork created: 1909
Size of artwork: 195 cm by 102 cm
Media used: oil paint

Klimt's Tree of Life is said to represent heaven and earth, and the connection between them - the branches are reaching for the sky, and the roots are growing into the earth. The swirling, twisting branches show how the path of life can be complicated.



Irises



Van Gogh created this painting towards the end of his life, in the gardens of the hospital where he had been admitted. He used strong outlines and intense colours. Some people think that the white flower is a symbol of how lonely Van Gogh felt whilst in hospital.

Artist: Vincent van Gogh (Dutch)

Date artwork created: 1889

Size of artwork: 71 cm by 93 cm

Media used: oil paint

Artist: Guiseppe Arcimboldo (Italian)

Date artwork created: 1587-1590

Size of artwork: 36 cm by 24 cm

Media used: oil paint

This artist is best known for his portrait heads made from overlapped fruits, vegetables, flowers and other items. This piece of art is particularly imaginative - held one way up, it looks like a bowl of vegetables, but held the other way up, we can see a face!



Vegetables in a Bowl
(The Gardener)

Can you see
both images?

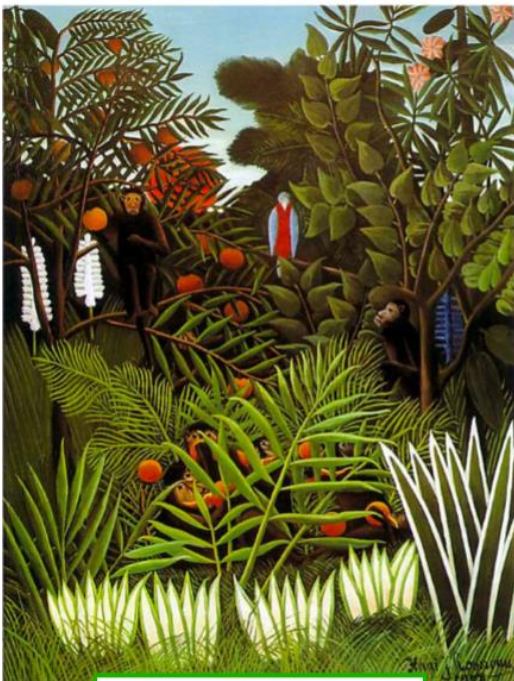


Evening; Red Tree



Artist: Piet Mondrian (Dutch)
Date artwork created: 1910
Size of artwork: 70cm by 99cm
Media used: oil paint

During this phase of his artwork, Mondrian experimented with painting realistically shaped objects, but used colours that were brighter than in real life. In this picture, he contrasted the cool blues of the background with the warm reds of the tree. This represents his vision of nature.



Exotic Landscape

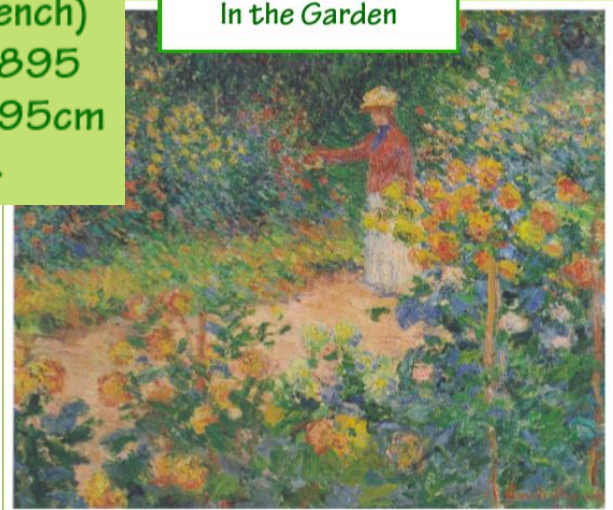
Artist: Henri Rousseau (French)
Date artwork created: 1908
Size of artwork: 116cm by 89cm
Media used: oil paint

Rousseau was a self-taught artist, who retired from his job to devote all his time to painting. He especially enjoyed painting jungle scenes. In this picture, he uses rich, vibrant shades of green for the leaves, grass and trees. The white used on the leaves in the foreground makes them stand out.

Artist: Claude Monet (French)
Date artwork created: 1895
Size of artwork: 81cm by 95cm
Media used: oil paint

Monet painted in the Impressionist style. This is a type of art that tries to capture a feeling or experience rather than being accurate. For this painting, Monet was inspired by his own garden.

In the Garden



Remember to post your work on twitter
because we love to see it and you can collect
house points!

