

ART Lesson 3

LO: To know how to create tints, shades and tones of colours

For the next three lessons you will need liquid paint (not a palette of hard paint), you can buy inexpensive tubes or bottles of paint from Poundland or supermarkets.



At first, we may just describe some flowers as a single colour, but if we observe closely, we can see that there are actually lots of different 'tones' of the same colour.

Do you know what the word 'tone' means?

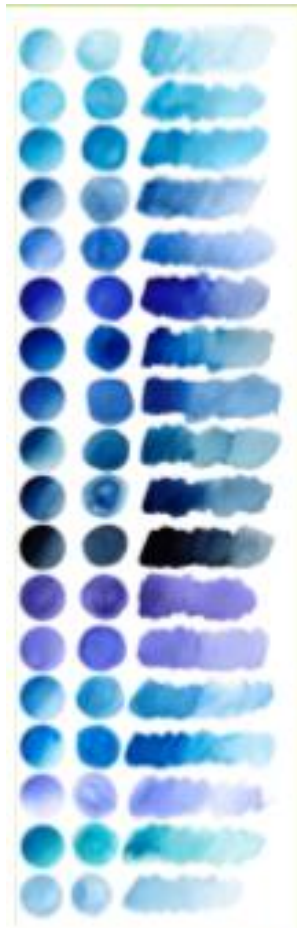


Look closely - can you see all of these different tones of green in the leaf?



A tone is a lighter or darker version of the original colour.

How many different tones of blue can you see in this flower?



The tones of colour that are chosen can also help to create a certain mood, atmosphere or feeling in the artwork.



Chrysanthemum

Tone can be used to create form (make the object seem less flat and more three dimensional on the paper).



Georgia O'Keeffe
1887 - 1986

Georgia O' Keeffe

Georgia O'Keeffe was an American artist. She is best known for her enlarged paintings of flowers. Between the 1920s and the 1950s, she created around 200 large-scale, close-up paintings of flowers.

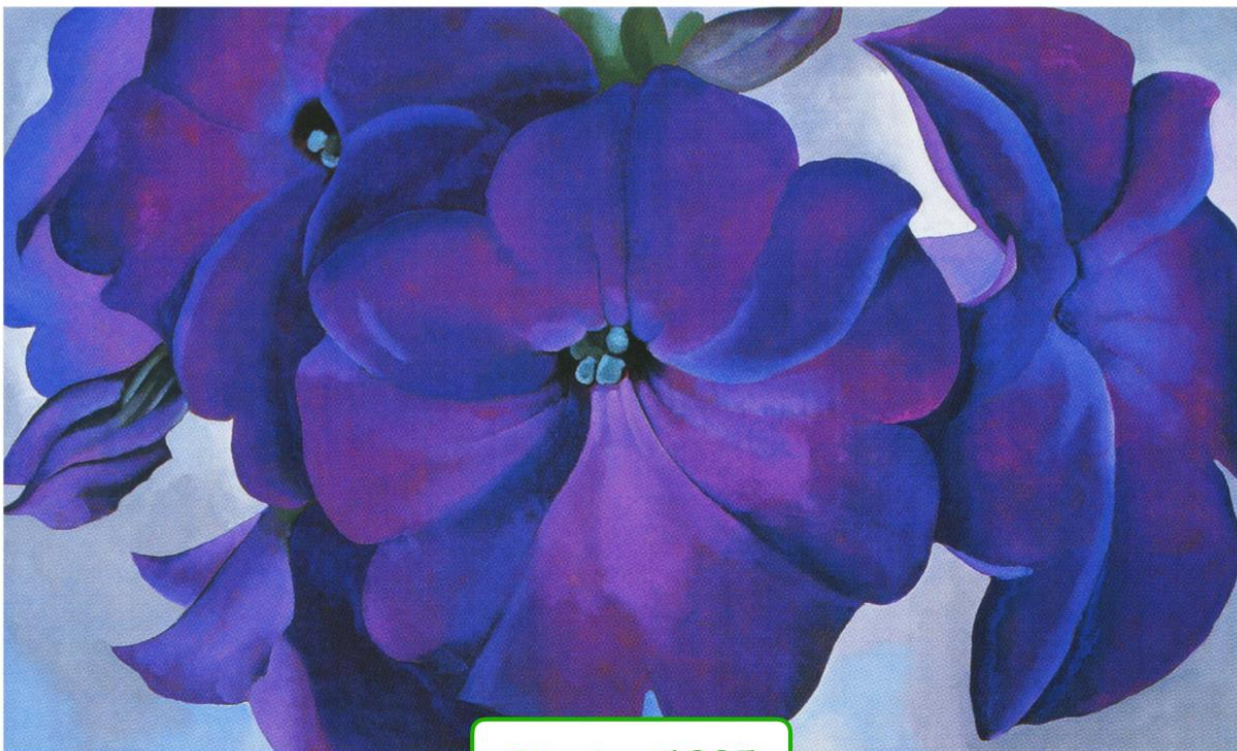
This is what she said about her choice of subject for her paintings:

'Nobody sees a flower really - it is so small...'

'I decided that if I could paint that flower in a huge scale, you could not ignore its beauty.'

Here are some of Georgia 'O' Keeffe's wonderful paintings.

Look at how her use of different tones has made her paintings less flat and more 3D.



Petunias 1925



Red Canna 1919

What is your personal opinion of Georgia O'Keeffe's artworks? Do you like them? Why?

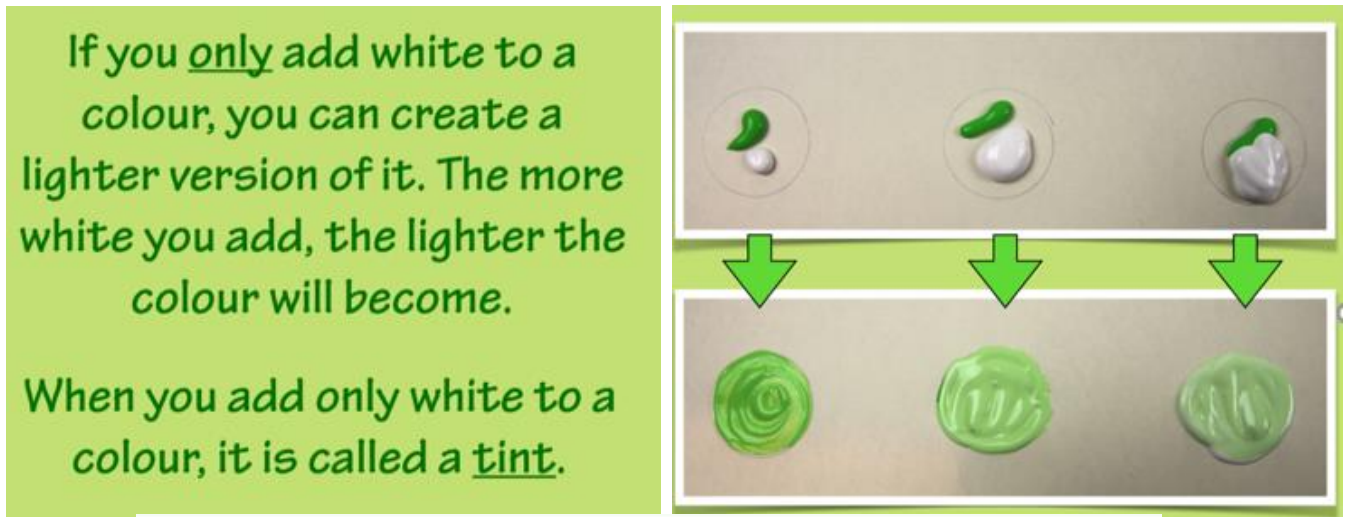


Bella Donna 1939

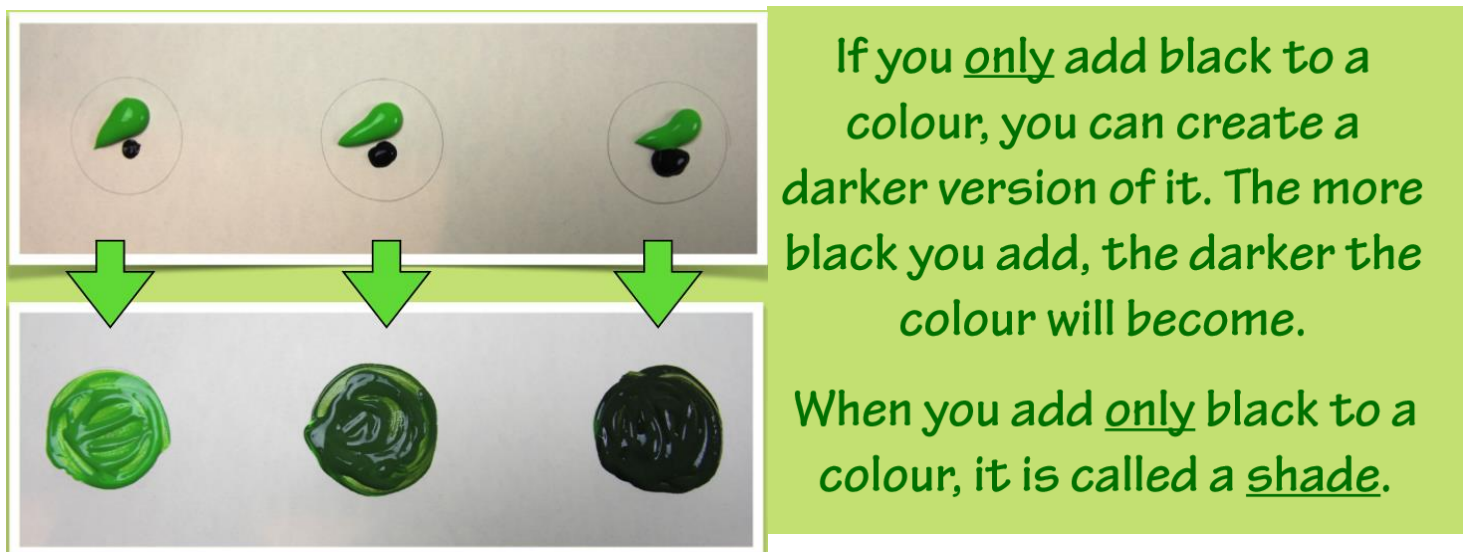
Your task

For this lesson you need white, black and one other Colour; here we have used green but you could use red or blue.

Try these activities, taking note of the amount of paint used:



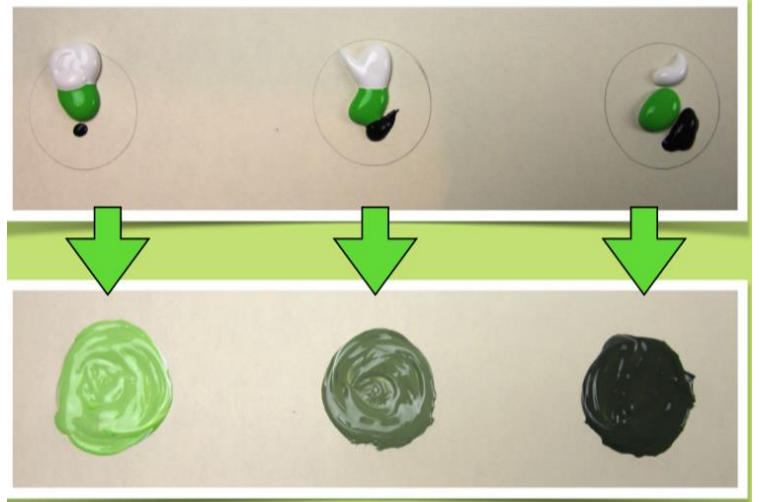
Tints can create soft and soothing colours.



Shades can create deep, powerful and mysterious colours.

If you add both black and white to a colour, you can create a more or less intense version of it, depending on the differing amounts of black and white that you use.

When you add both black and white to a colour, it is called a tone.

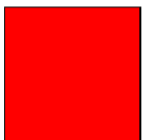


Tones are more true to the way we see colours in the real world.

FINALLY...

Either black or white has been added to each of the original colours. Which of the new colours are tints, and which are shades?

Original colour:



Tint or shade?

Original colour:



Tint or shade?

Original colour:



Tint or shade?

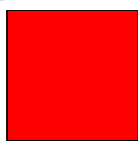
Original colour:



Tint or shade?

Did you correctly identify the lighter versions as tints, and the darker versions as shades?

Original colour:



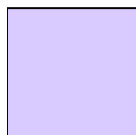
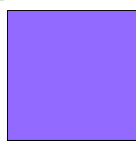
Shade

Original colour:



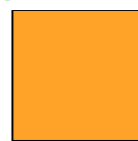
Tint

Original colour:



Tint

Original colour:



Shade

Remember to post your work on twitter
because we love to see it and you can collect
house points!

